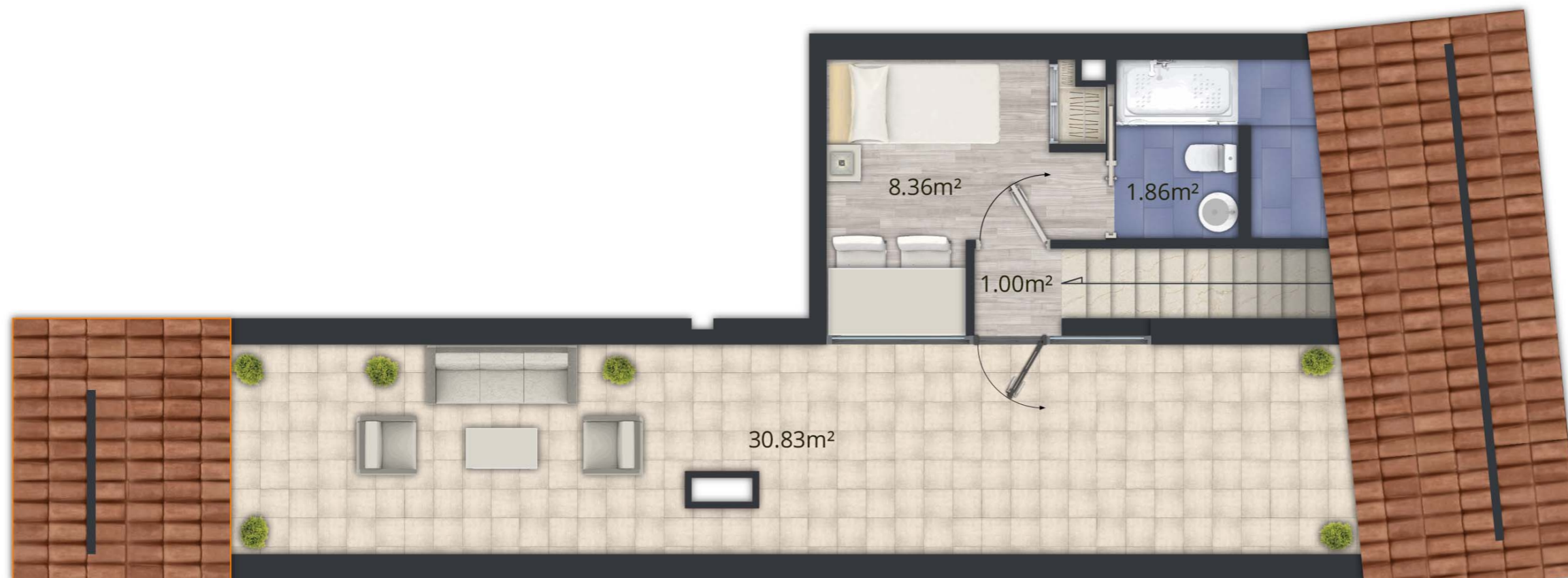
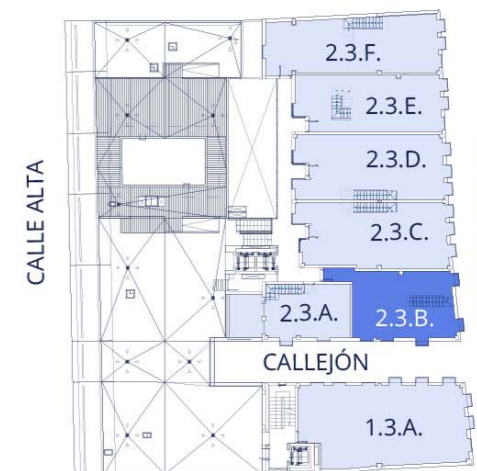


VIVIENDA - 2.3.B

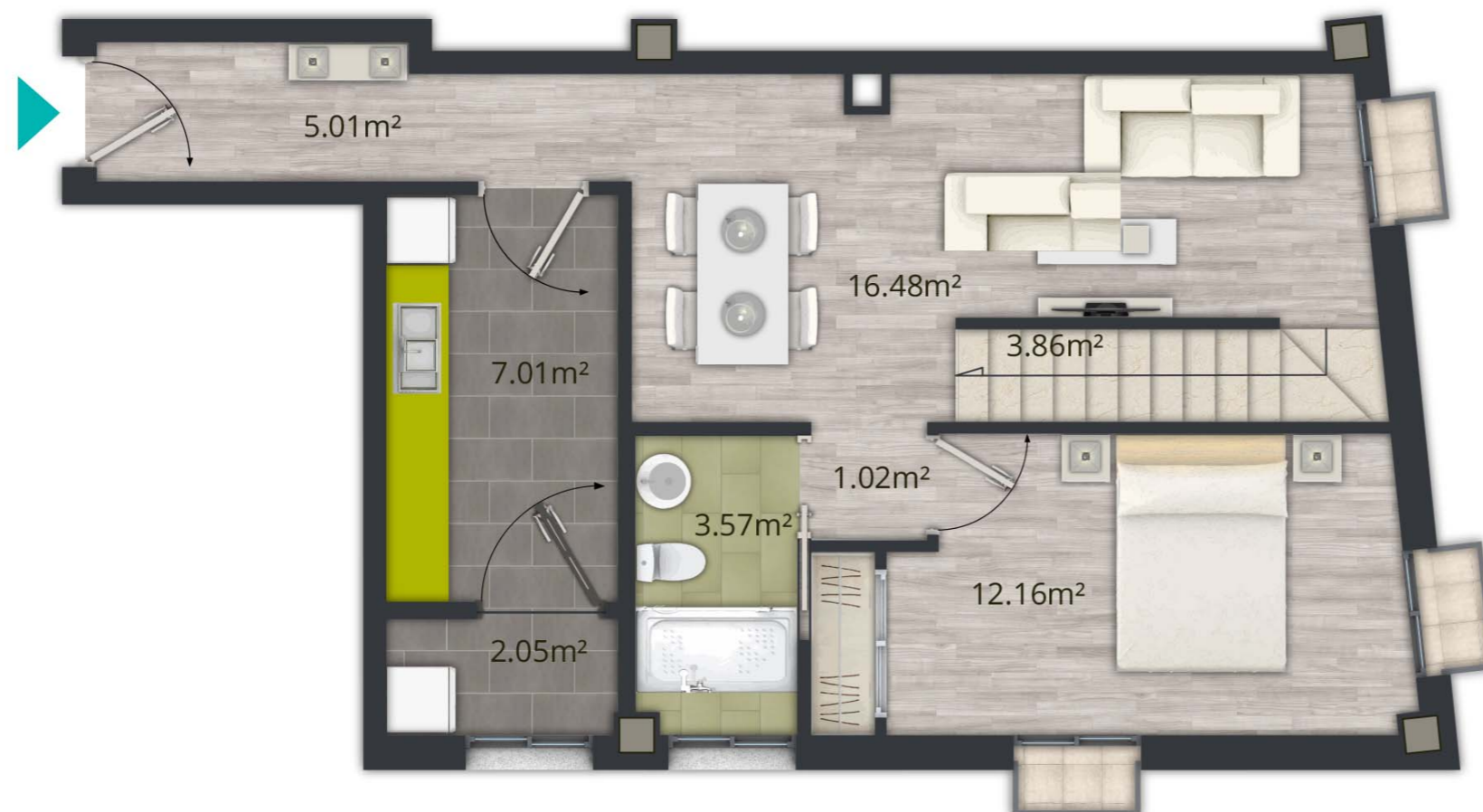
SUPERFICIE ÚTIL	62,38 m ²
SUPERFICIE CONSTUIDA PROPIA	75,54 m ²
SUPERFICIE CONSTUIDA CON P. P. Z. C.	107,98 m ²



CALLE POSTIGOS



NIVEL 3



CALLE POSTIGOS